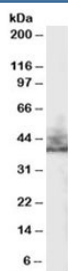


## NHERF2 Antibody [Isoform a] (R33462)

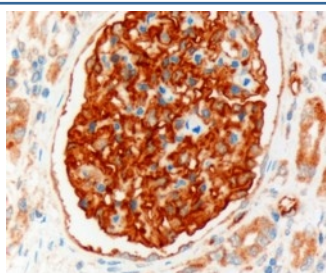
Catalog No.	Formulation	Size
R33462-100UG	0.5 mg/ml in 1X TBS, pH7.3, with 0.5% BSA (US sourced) and 0.02% sodium azide	100 ug

[Bulk quote request](#)

Availability	1-3 business days
Species Reactivity	Human
Format	Antigen affinity purified
Clonality	Polyclonal (goat origin)
Isotype	Goat Ig
Purity	Antigen affinity
Gene ID	9351
Applications	Western Blot : 0.3-1ug/ml Immunohistochemistry (FFPE) : 1-2ug/ml ELISA (peptide) LOD : 1:32000
Limitations	This NHERF2 antibody is available for research use only.



Western blot testing of human kidney lysate with NHERF2 antibody at 0.3ug/ml.  
Predicted molecular weight: ~37kDa.



IHC staining of FFPE human kidney with NHERF2 antibody at 3ug/ml. HIER: microwaved with pH9 Tris/EDTA buffer, HRP-staining.

## Description

Additional name(s) for this target protein: Solute carrier family 9 (sodium/hydrogen exchanger), isoform 3 regulator 2; SLC9A3R2

## Application Notes

Optimal dilution of the NHERF2 antibody should be determined by the researcher.

1. This NHERF2 antibody is specific for isoform a, a variant with 11 additional amino acids (immunizing sequence).

## Immunogen

Amino acids DGSARKQDPFQ were used as the immunogen for this NHERF2 antibody. This sequence is from the region of the a isoform that makes it unique.(1)

## Storage

Aliquot and store the NHERF2 antibody at -20oC.